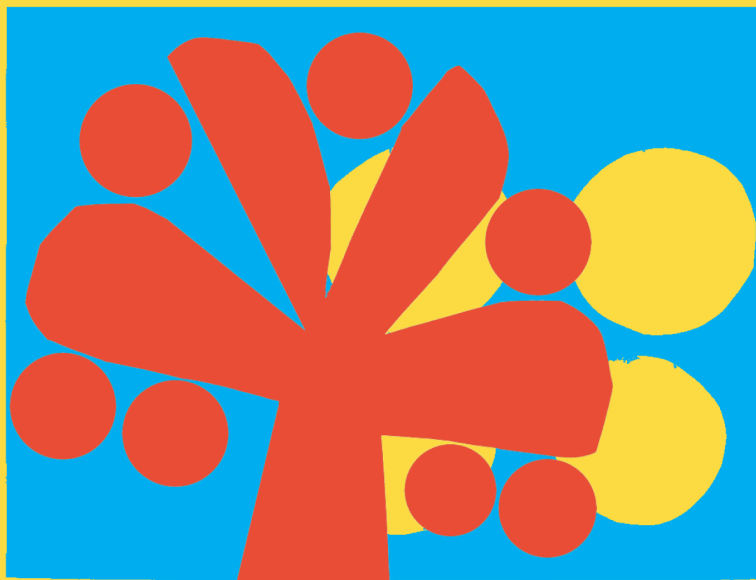


Pattern on the back



1

You are a natural pattern recogniser.

Let's look closely together and notice some of the patterns in our collections.



2

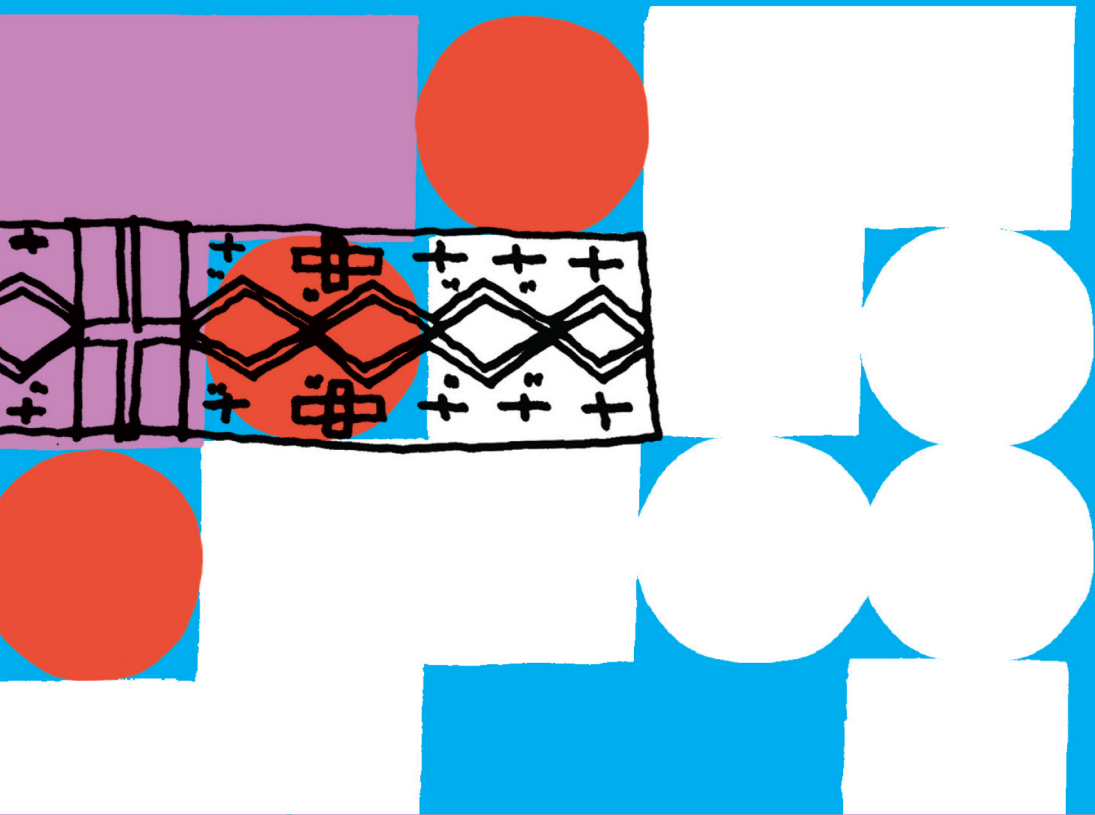
Plot a path to **Port of Plymouth** and find the Elburton Urn. The pattern was made by pressing ears of wheat into wet clay. How would you decorate this urn?



3

Head to 100 Journeys.

Find the beautiful chest ornament made by the Xhosa people of South Africa. The patterns and colours mean different things. Can you draw your own pattern?



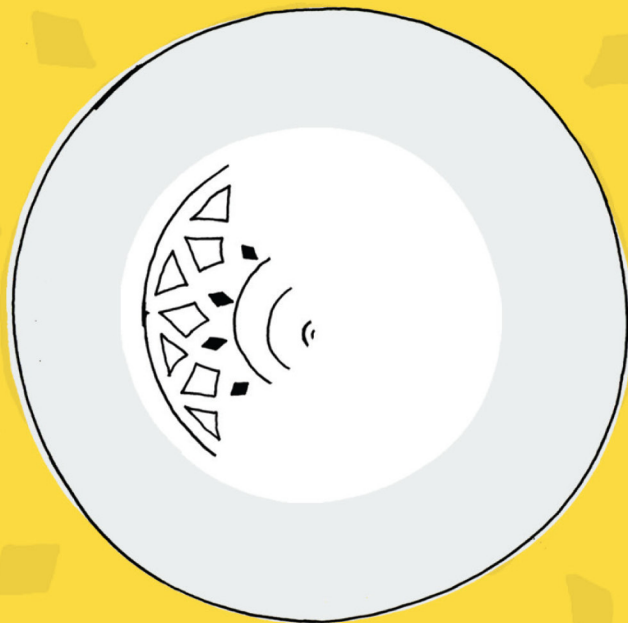
4

Now go to **Mammoth** and find the butterflies. Each has a different wing pattern to help them hide from predators. Can you help this one blend in?



5

Head upstairs to **Media Lab** and find a speaker with an amazing pattern – can you add the pattern to this speaker?



Supported using public funding by
**ARTS COUNCIL
ENGLAND**



Designed by:
smithandlewarne.com

#LearnWithTheBox