

A young girl with brown hair, wearing a red puffer jacket, is looking upwards with a smile. In the background, another child is holding a yellow balloon. The scene appears to be indoors, possibly at a museum or gallery event.

Mayflower 400: Legend and Legacy

Pre-visit resource



Museum
Gallery
Archive

Mayflower 400: Legend and Legacy

Key Stage 2

About this pre-visit resource

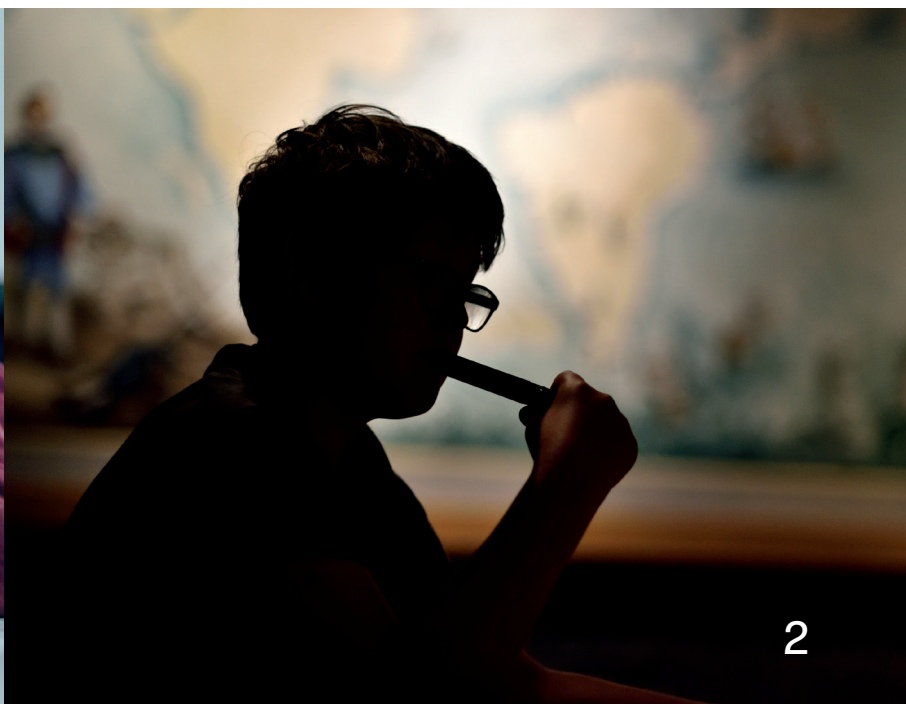
This pre-visit resource gives you detailed information about the session you are attending with your class, as well as some extra tips about our venue, so that you can be well prepared for your visit to The Box.

About this workshop

This workshop takes place in the **Mayflower 400: Legend and Legacy** exhibition. It supports students to develop object enquiry skills, so that they can use evidence to better understand the history connected to the transatlantic voyage of the Mayflower ship. Students get unprecedented access to real and replica objects and artefacts, bringing them 'out of the case' for the students to explore.

Curriculum links:

History: Local history study: A study of an aspect or theme in British history that extends pupils' chronological knowledge beyond 1066.



Mayflower 400: Legend and Legacy

Key Stage 2

Detailed Workshop Outline

The session starts in the **Mayflower 400: Legend and Legacy** exhibition, with The Box's Learning Facilitator introducing themselves and The Box. The students are invited to consider gallery visiting skills, including interacting with the objects and archives on display.

1. The Schools Learning Facilitator will then introduce the background history surrounding the voyage of the Mayflower in 1620 by using a giant map and a timeline.
2. Using a handling object, the Schools Learning Facilitator will then introduce object enquiry and object handling skills to the group, enabling the students to later use these skills for their own independent enquiry.
3. The students will then be split into six smaller groups. Each group will be given a set of handling objects on a different theme – many of the handling objects will be derived from the objects on display in the gallery cases in the Mayflower exhibition. The students will investigate their theme, using prompting questions to support their enquiry.

The themes the students will investigate are:
4. In their smaller groups, the students will have the chance to rotate around three themes of handling objects and archival material. Whilst they are exploring the objects, the students will be supported by the Schools Learning Facilitator to uncover interesting observations about the history they are exploring.
5. The group will then be brought back together, to consider the legacy and impact of the arrival of the Mayflower to America. This will include viewing a film of Wampanoag people who live in America today.
6. The session will conclude with the students reflecting on what they have found out and what has surprised them about their investigation. The Schools Learning Facilitator will also signpost learning pathways, for how the students can continue to learn about the history connected to the Mayflower voyage.

- Experiences of England and Leiden
- Plymouth and the world in 1620
- The Mayflower's journey across the Atlantic
- Arrival to America
- Cultures in contact – the Wampanoag people

Mayflower 400: Legend and Legacy

Key Stage 2

Key themes

Key themes of the workshop include:

- Mayflower
- Journeys
- Cultural understanding
- Conflict
- Archaeology

Key vocabulary

Key and new vocabulary covered in the workshop includes:

- Wampanoag
- Wetu
- Hubbub
- Pow Wow
- Voyage / Journey
- Armour / Munitions
- Separatist
- Leiden
- Plantation

Preparing for your session

The Box has developed a set of resources to support your teaching in the classroom connected to Mayflower. This includes an animation, timeline, biographies, podcasts, teachers packs and more. Visit theboxplymouth.com/schools/learning-resources to see them all.

Plan a pre-visit to The Box before you come with your class, so you are familiar with the environment and spaces before your visit.

Visit the galleries

The galleries at The Box hold objects and archives about the topic you have explored in this session, as well as other fascinating subjects. To find out more about this topic, visit these galleries at The Box:

100 Journeys

Risk assessment

To help you to write your risk assessment for your visit, we have created a Teachers Hazard Assessment which holds common risks and solutions that you might want to include. Visit this page <https://www.theboxplymouth.com/schools/school-visits> for the Hazard Identification Sheet.

Visit our website for the
latest offers, news and
projects for schools
and to book your
experience with us:
theboxplymouth.com

