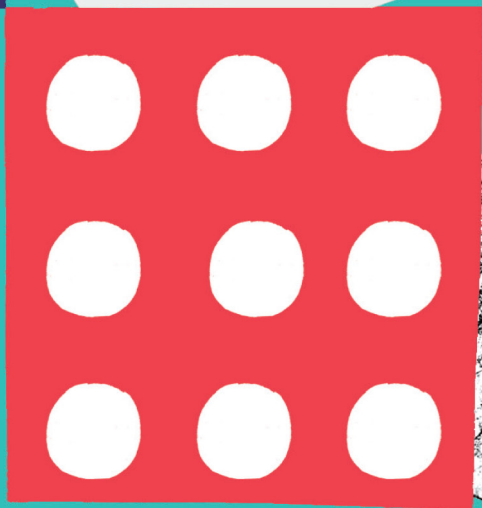
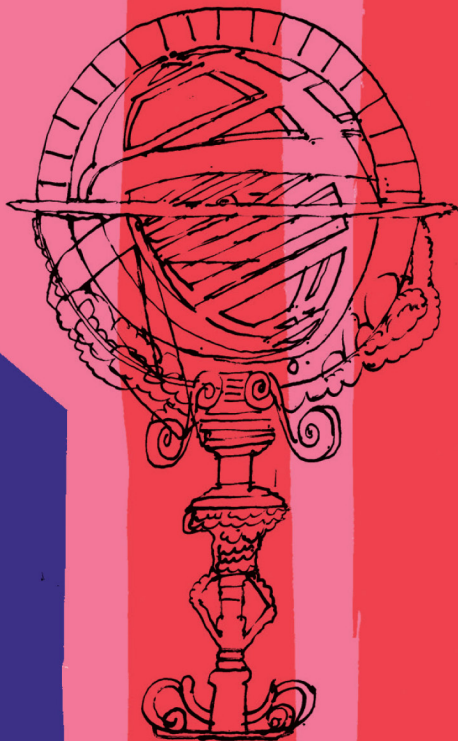


**So many
materials!**



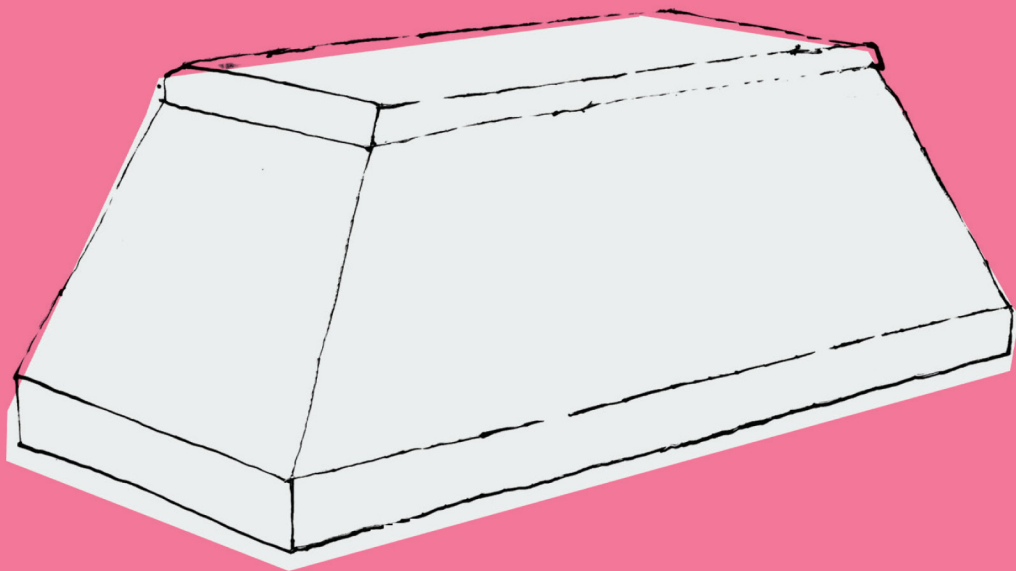
1

Different **materials** have different **properties** which make them suitable for different uses. Let's find out how some have been used in our collections.



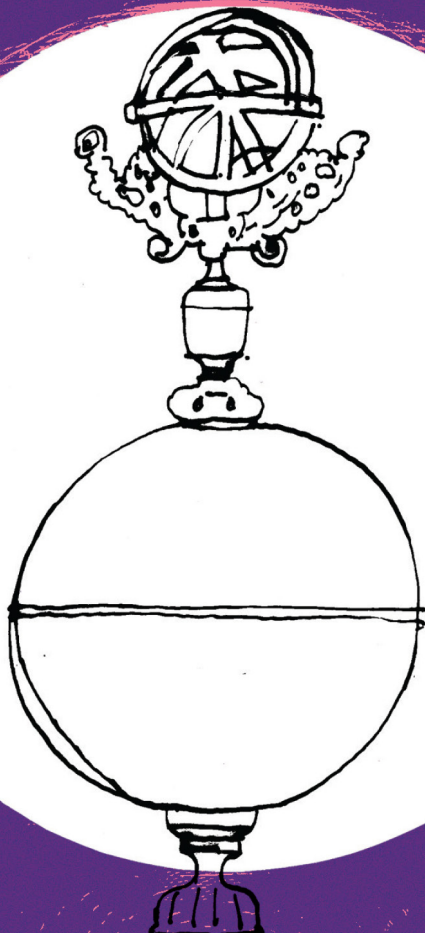
2

Head to **Port of Plymouth** and find a sculpture by artist Keith Harrison. It looks super-heavy, but what material is it made from?



3

Head to **100 Journeys** and find a sparkling gold and silver cup thought to have belonged to Sir Francis Drake. What is etched into its surface?



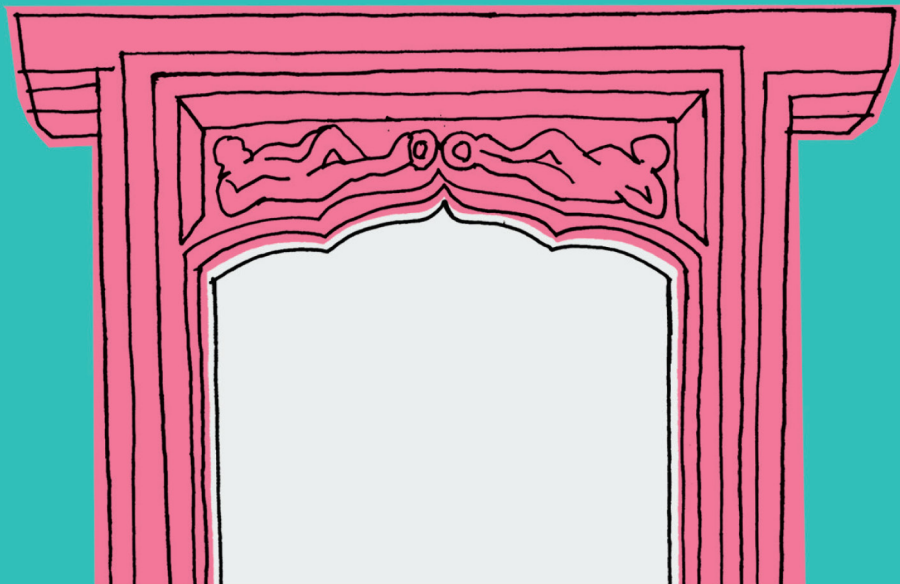
4

Now go to **Mammoth** and find the specimens of cassiterite. If you were to roast this at $1,300^{\circ}\text{C}$ (don't try this at home!), what metal could you extract?



5

Head up to **Active Archives** and see if you can spot a big, carved wooden door frame. Can you find out how old this is, and where it came from?



Supported using public funding by
**ARTS COUNCIL
ENGLAND**



Designed by:
smithandlewarne.com

#LearnWithTheBox