

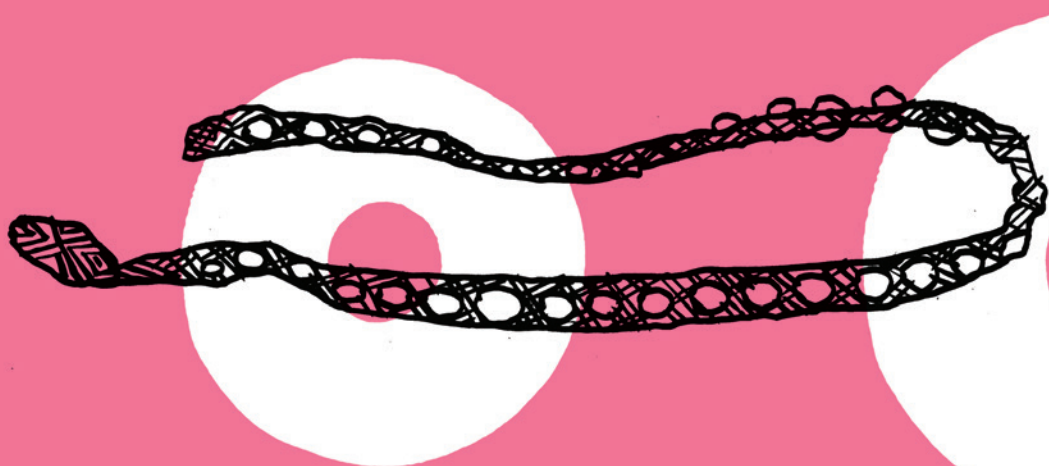


# Thinking and Making

# 1

## You are a creative force

Instead of just looking at things today, let's also ask questions about the things we see.



## Wander through to Port of Plymouth.

Find the objects discovered at Whitehorse Hill. Craft techniques from the Early Bronze Age are even difficult for modern makers to remake now. How long ago were they made?

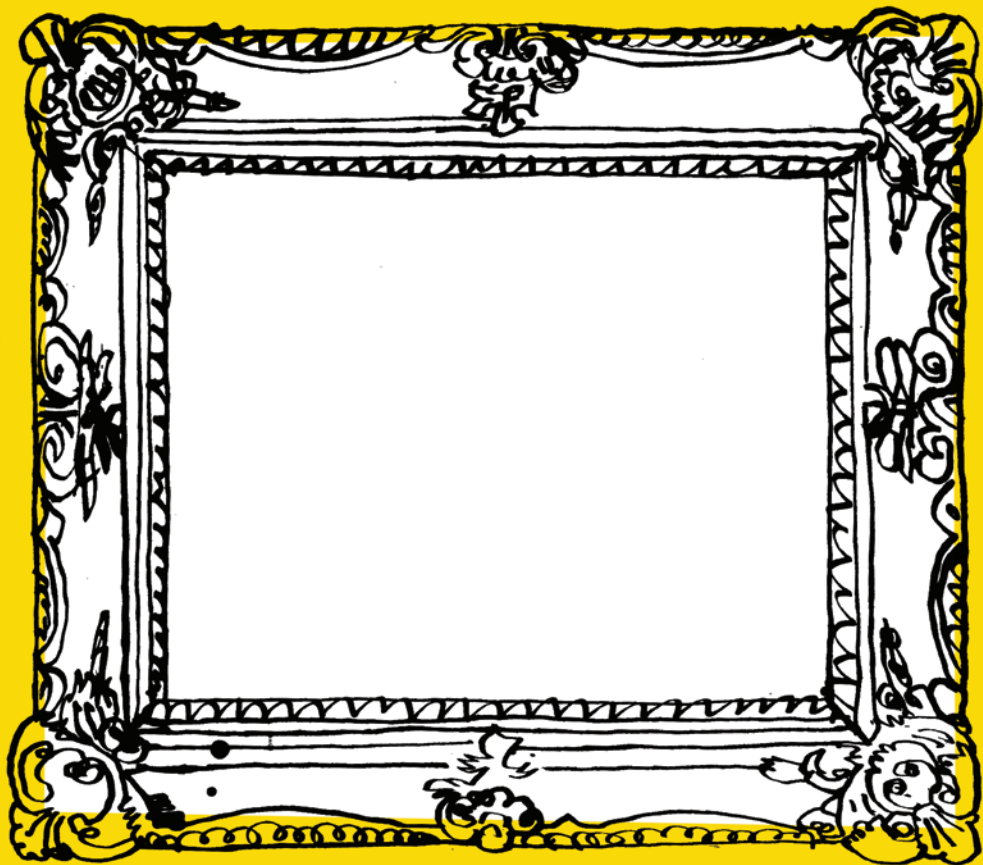


2

Head through to **100 Journeys** and find explorer Gertrude Benham's boots. She exchanged some items for her own knitted creations while travelling. Can you draw the boots here?  
Where in the world are they from?

# 3

Let's go upstairs to Our Art. Find some paintings by a very important artist from Plympton - Sir Joshua Reynolds. Can you draw your own self-portrait?





Look in the huge case for some ceramics by William Cookworthy.



4

He discovered how to make the type of porcelain we use today - right here in Plymouth.

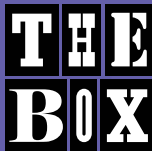
So, was Cookworthy an artist or a scientist?

# 5

## Head to Media Lab.

Can you find the earliest film on display? You may have to wait to see it – look out for a train track...

Can you make a short film about your visit today? Try using our green screen or make something on your phone. Don't forget to share it with us too.



Supported using public funding by  
**ARTS COUNCIL  
ENGLAND**



**#LearnWithTheBox**